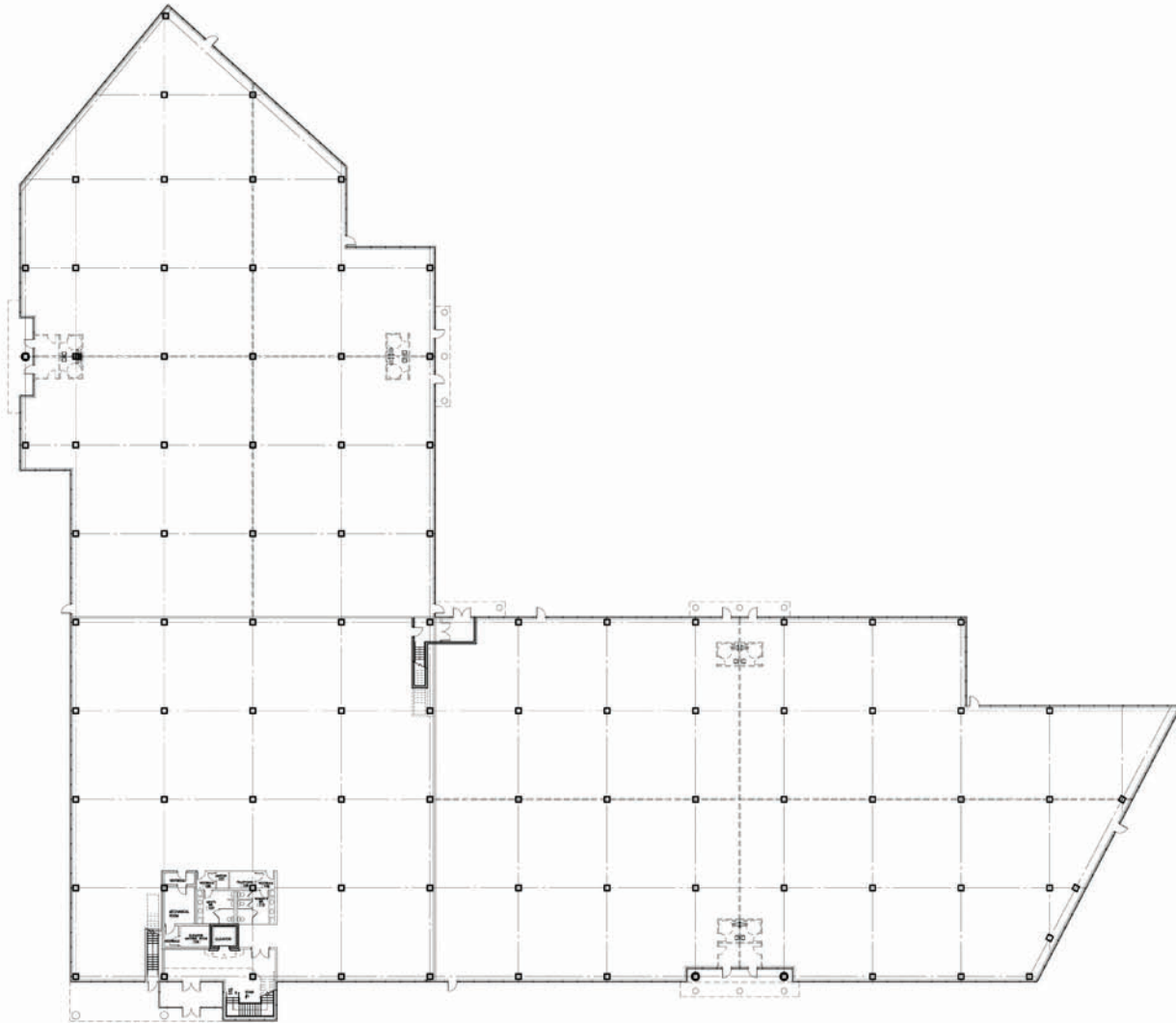


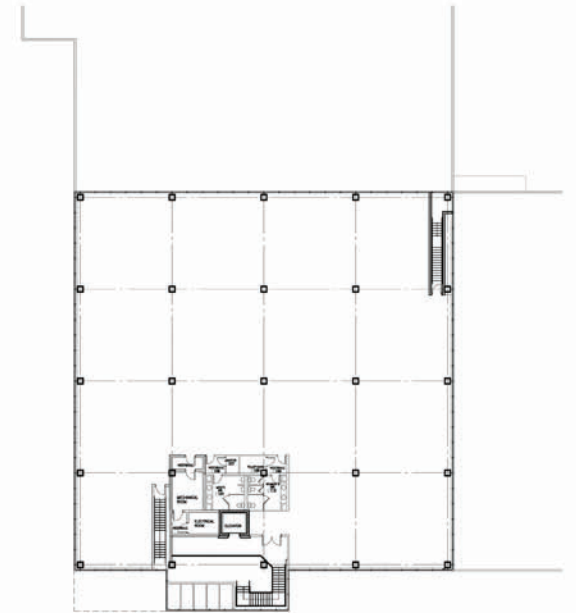


Proposed New Office Building
2950 Citation Place
(Eglinton Avenue East & Renforth Drive)
Mississauga, Ontario





FIRST FLOOR PLAN



SECOND FLOOR PLAN

Proposed New Office Building
2950 Citation Place (Eglinton Avenue East & Renforth Drive)
Mississauga, Ontario





PROJECT STATISTICS

• ZONING	E1 – EMPLOYMENT ZONES		
• LOT AREA	4.23 ACRES	17,136 SQ.M.	184,456 SQ.FT.
• BUILDING AREA	(OFFICE SPACE = 18% ON TYPICAL UNITS)		
GROUND FLOOR	6,045.90 SQ.M.	65,079.65 SQ.FT.	
SECOND FLOOR	1,474.46 SQ.M.	15,871.47 SQ.FT.	
TOTAL GROSS FL. AREA	7,520.36 SQ.M.	80,951.12 SQ.FT.	
GROUND FLOOR AREA (FOOTPRINT)	6,045.90 SQ.M.	65,079.65 SQ.FT.	
• LOT COVERAGE			
GROSS FLOOR	35%		
LANDSCAPE AREA	15%		
PAVED AREA	50%		

• PARKING

PARKING REQUIRED		
OFFICE		
(3.2 SPACE PER 100 S.M.)	267 SPACES	
TOTAL REQUIRED	267 SPACES	
PARKING PROVIDED		
AT GRADE	260 SPACES	
PARKING DECK	65 SPACES	
(INCLUDING 7 H.C. SPACES)		
TOTAL PROVIDED	325 SPACES	
HP PARKING REQUIRED	7 SPACES	
HP PARKING PROVIDED	7 SPACES	
LOADING REQUIRED	2 SPACES	
LOADING PROVIDED	2 SPACES	

SITE PLAN

Proposed New Office Building
 2950 Citation Place (Eglinton Avenue East & Renforth Drive)
 Mississauga, Ontario

