

370 MARWOOD DRIVE, OSHAWA, ONTARIO

FOR LEASE
16,740 Sq. Ft.



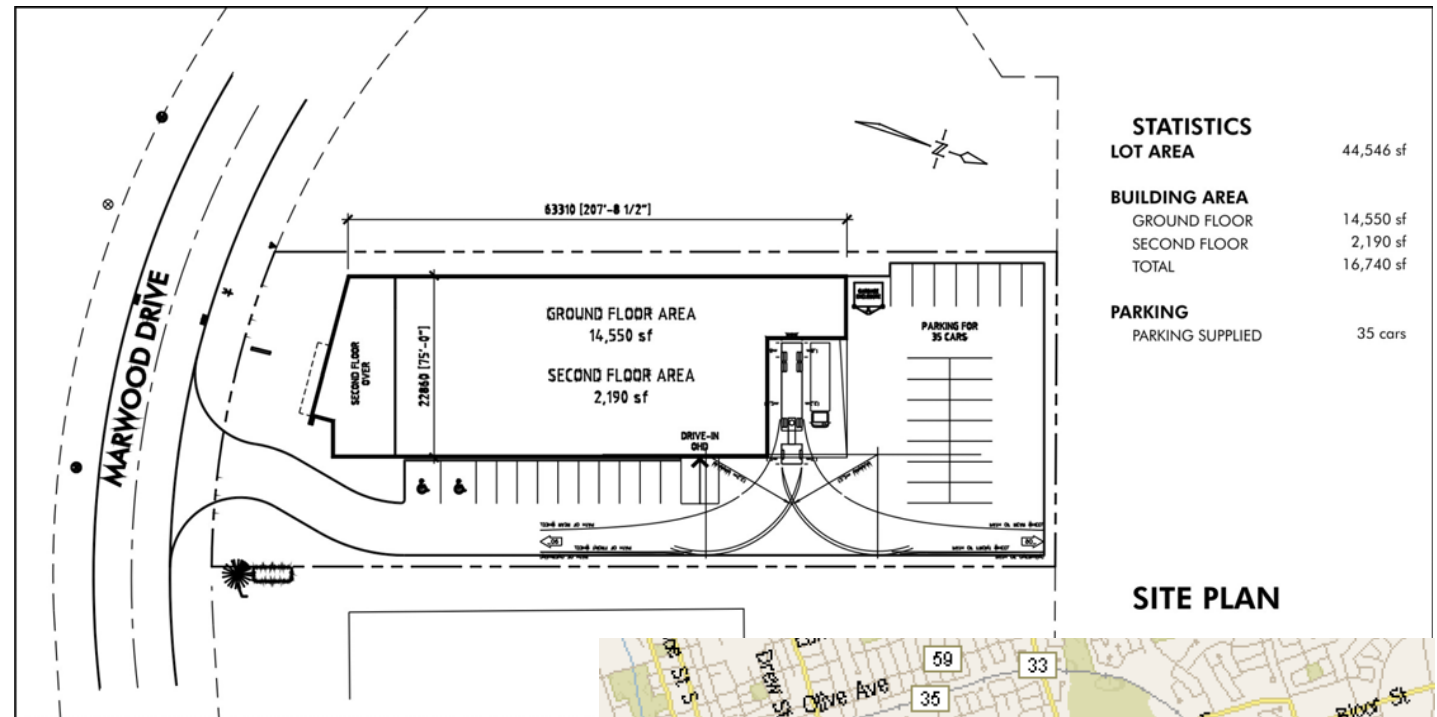
FACILITY SIZE: 16,740 Sq. Ft.
OFFICE AREA: 10%
SHIPPING: 2 truck-level doors
1 drive-in door
CLEAR HEIGHT: 24 feet
ZONING: Select Industrial
POWER: 400 Amps / 600 Volts
AVAILABILITY: 180 days or TBD
LEASE RATE: \$6.95 per sq. Ft.

COMMENTS :

- Fully sprinklered
- 35 parking spaces
- Air-conditioned offices
- Metal halide lights
- Floor drains
- Gas forced air open heating
- Beautiful combination pre-cast metal sandwich wall construction
- Thermo pane glass front
- Energy efficient construction

370 MARWOOD DRIVE, OSHAWA, ONTARIO

FOR LEASE
16,740 Sq. Ft.



- Site plan approved
- Ready for construction
- Owners are flexible and can modify the internal specifications to accommodate tenant requirements

